

Heating and Cooling Meter
Heating Plants, Commerce and Industry



CONTROLS SUPPLY CHAIN
VALVES ACTUATORS INSTRUMENTATIONS



Ultrasonic Heating and Cooling Meter

ULTRAHEAT/ ULTRACOLD qp 150

The new dimension:
flow part with
exchangeable measurement insert



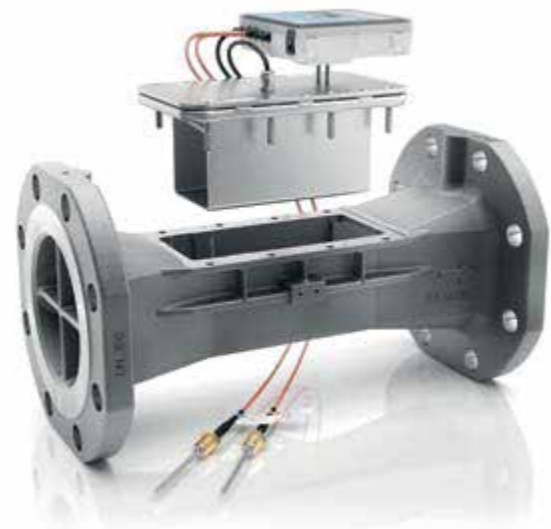
New dimension - new concept - proven technology

Particularly for the sophisticated applications in the industry, large residential buildings or heating plants, the ULTRAHEAT®-family was extended by the nominal flow size of qp 150.

The redesigned ULTRAHEAT qp 150 works with the high-precision and proven ultrasonic technology and can flexibly be used as a heating-, cooling- or flow meter.

The special feature is the exchangeable measurement insert, which significantly simplifies maintenance and recalibration and reduces life-cycle costs simultaneously. The flanged body remains permanently in the system – without any influence on the measuring accuracy and stability. This distinguishes the new ULTRAHEAT from similar measuring devices.

The entire flow part is made of high-quality and corrosion-resistant stainless steel.



Features

- L+G ultrasonic technology, proven - precise - stable
- Maintenance-free - without any moving parts
- Simply exchangeable measurement insert - without removing the flanged body - no special tooling necessary
- Cost-saving recalibration with lowest mounting effort - very low operating and switching costs
- High-quality V4A stainless steel construction, robust - durable - corrosion-resistant
- No mounting restrictions and no straight pipe sections required, shaft fitting possible (flow part)
- Full functionality of T550 (UH50...) or T150 (2WR7...)
- T550 with power supply or battery for up to 16 years

Technical Data

| | | | | | |
|------------------------------|--------------|------|----------------------------|-------------|-------------------|
| Length | 500 | mm | Nominal flow q_p | 150 | m ³ /h |
| Connection | DN150 flange | | Maximum flow q_s | 300 | m ³ /h |
| Pressure range | PN16/ PN25 | | Minimum flow q_l (1:100) | 1500 | l/h |
| Protection class (flow part) | IP68 | | Response threshold | 600 | l/h |
| Temperature range | 5 - 130 | °C | Overload flow | 2.8 x q_p | |
| Permanent temperature | 130 | °C | Metrological class | 1:100 | |
| Pressure loss at q_p | < 120 | mbar | Accuracy class | 2 | |
| | | | Environmental class | E1 and M1 | |

High flexibility with low life-cycle costs - exchangeable measurement insert

The calibrated measuring unit consists of the measuring channel, the sealing plate with the proven ultrasonic transducers and the adjusted electronic of the T550 (UH50...) or T150 (2WR7...). The flanged body itself has no influence on the measuring accuracy or stability and remains permanently in the system. For recalibration only the lightweight measurement insert needs to be exchanged. This can easily be done by one person and without any special tooling, reducing life-cycle-costs tremendously.



Innovations of new dimension

Already during the construction phase of a system the flanged body with interim cover can be used as a spacer. The innovative measuring technology can be installed right before start-up of the system. The demounting of the flanged body is omitted because it remains in the system permanently. Only the measurement insert will be exchanged with a few steps. This saves costs during installation and during every calibration exchange.



Waterproof- The flow part

The flow part and the measurement insert consist of high-quality stainless steel and are IP68 approved. The electronic unit with a maximum cable length of 5 m can be mounted separately. This allows operation even under harsh environmental conditions. The functionality of the electronic unit is identical with those of other nominal sizes. It requires no new products in terms of service and communication.





CONTROLS SUPPLY CHAIN

VALVES ACTUATORS INSTRUMENTATIONS